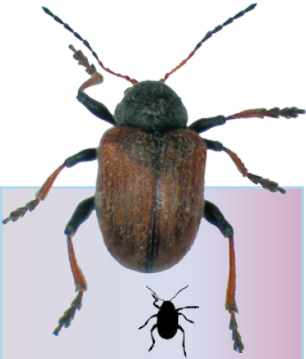


Phratora

Length: 1/8- 3/16". Metallic black-purplish or dark blue. Adults hide in the daytime on leaves or with their head wedged in the crotch formed by the petiole (base of the leaves) and the stem. The larvae of *Phratora interstitialis* feed hidden under the dense hairs covering the underside of the leaves of feltleaf willow and Sitka willow. Three species occur in Southcentral Alaska. *P. kenaiensis* is found on aspen, *P. interstitialis* on Sitka and feltleaf willows, *P. hudsoniana* on paper birch. The genus *Phratora* is found in the whole Northern hemisphere.

**Flea Beetle***Altica tombacina*

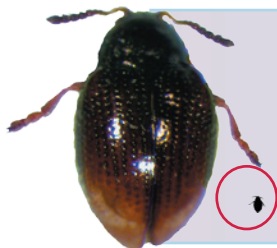
Length: 1/8". Dark metallic, hind legs strongly developed, adapted for jumping. 4 species known in Alaska. Found in open woodlands, and gardens. Feeds on alder, birch, dogwood, rose, heuchera, strawberry, potentilla, fireweed. *Altica bimarginata* is metallic blue.

*Bromius obscurus*

Length 3/16". Body dull brown or blackish, covered with dense short hairs, claws double-pointed. Found in open woodlands, garden. The beetle feeds on a variety of plants such as fireweed, strawberry, and Scouler willow. Widespread in the Northern

*Phyllotreta**zimmermanni*

Length: 1/16". Elytra with black and yellow stripes. *Phyllotreta undulata* in Europe causes considerable damage to vegetables, especially in moist sites. *Phyllotreta* is found in the whole Northern hemisphere.

*Hippuriphila mancula?*

Length: 1/16". Elytra bronze with tips yellow. It is found in moist places. Adults feed on horsetail. A second species, *H. canadensis*, is also found in Alaska: *H. mancula* is found in the whole Northern hemisphere.



Aquatic and semi-aquatic Leaf Beetles

The body of aquatic species is covered with dense water-repellent hairs that trap a layer of air for breathing during submersion. Larvae of aquatic species feed mostly on submerged vegetation while adults feed above the surface.

*Plateumaris* sp.

Length 3/8". Body metallic coarsely sculptured, antennae long. In the spring, the females lay eggs on submerged portions of the food-plant. The aquatic larvae feed on plant sap and get their oxygen by boring, using two hooks at the end of the abdomen, into the hollow plant cells that store oxygen. At the end of the summer, the larvae pupate inside a submerged cocoon filled with air. The adults metamorphose in the fall but remain in the cocoon until spring. Beetles of his genus, of which 6 species are known from Alaska, live on a variety of plants growing in wetland and at the margin of lakes: they feed on rush, bulrush, sedge, calamus, spikerush, marsh marigold, and buttercup. *Plateumaris* is present in the whole Northern hemisphere.

Galerucella nymphaeae

Length 3/8". Both larvae and adults are semi-aquatic and feed on floating vegetation on lake and ponds such as yellow pond lily, polygonum, sweet gale, dock, and pondweed. Beetle feeding causes brown blotches on the leaves. The genus is represented in the whole Northern hemisphere.

